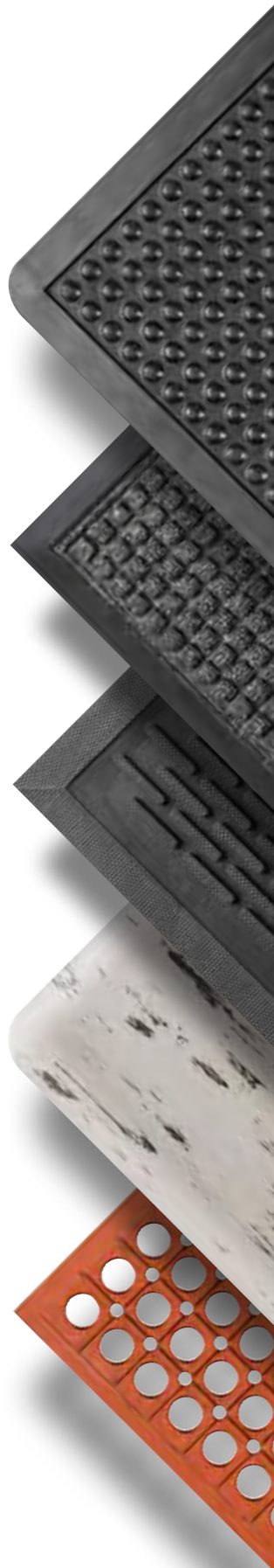


# Floor Mats

Designed to endure wear.

deflecto®



## Table of Contents

### Anti-Fatigue Floor Mats

3 MARBLE TOP

4 BUBBLE

5 TEXTURED

6 RIBBED

7 STANDING

8 UTILITY

### Indoor/Outdoor Floor Mats

9 ENTRANCE

10 BRUSH TIP SCRAPER

11 CLEATED SCRAPER

## Why Deflecto® Floor Mats

### One Stop Shop

Add floor mats to existing PO's with other Deflecto products

### Brand Recognition

Trusted name and a proven history/working relationship

### Customer Service

Knowledgeable support staff

Deflecto Floor Mats are designed with employee safety and floor protection in mind. From fatigue to accidental falls, our mats are a necessity throughout the workplace.

Since floor mats are also the first thing visitors see, get a grip on dirt, moisture and grease and make a great first impression. Keep customers and employees safe and happy from entrance to breakroom.

## Look for These Icons Inside

Specific features for usage and placement are indicated with the following icons:



DRY AREA  
INDOOR ONLY



WET AREA  
INDOOR/OUTDOOR



GREASE-PROOF  
KITCHENS/INDUSTRIAL



RECYCLED  
MATERIAL



WARRANTY  
LIMITED  
PRODUCT  
REPLACEMENT

## Quick Reference Guide

Floor Mat Name	Material	Anti-fatigue	Indoor/Outdoor	Wet or Dry Area	Thickness	Recycled Content	Warranty
Marble Top	Vinyl	Yes	Indoor	Dry	1/2"	Yes	2 Year
Bubble	Rubber	Yes	Indoor	Dry	5/8"	No	1 Year
Textured	Vinyl	Yes	Indoor	Dry	3/8"	No	1 Year
Ribbed	Vinyl	Yes	Indoor	Dry	3/8"	No	1 Year
Standing	Polyurethane	Yes	Indoor	Dry	3/4"	No	5 Year
Utility	Rubber	Yes	Indoor	Wet/Dry	1/2"	Yes	1 Year
Entrance	Polyester/Rubber	No	Indoor/Outdoor	Wet	1/4"	Yes	1 Year
Brush Tip Scraper	Rubber	No	Indoor/Outdoor	Wet	5/8"	No	1 Year
Cleated Scraper	Rubber	No	Indoor/Outdoor	Wet	1/4"	No	1 Year



# Anti-fatigue Mats



Your feet keep you up and moving all day. Let Deflecto help you maintain wellness and increase productivity through proper support.

Our long-lasting anti-fatigue mats help prevent discomfort in your feet, legs and back, providing a healthier, more productive workspace.

Anti-fatigue mats can provide support in all environments where extended periods of standing can occur.



- Service Counters
- Salons
- Check-out Counters
- Hostess Stations



## Marble Top Mats Anti-fatigue



- Puncture resistant vinyl on a sponge base
- Provides all-day anti-fatigue relief
- Easy to maintain – wipe with damp cloth

Beveled  
Edge



1/2"  
Thick

PART NO.	COLOR	SIZE	UPC (00079916)	CASE PK. /MOQ	CASE DIM.	CASE WT. (LBS.)
FMFAF2436MGY	Gray	2' x 3'	02947 4	1	7" x 7" x 26"	6
FMFAF3660MGY	Gray	3' x 5'	02949 8	1	7" x 7" x 38"	17
FMFAF2436MBK	Black	2' x 3'	02946 7	1	7" x 7" x 26"	6
FMFAF3660MBK	Black	3' x 5'	02948 1	1	7" x 7" x 38"	17

Sponge Backing





## Bubble Mats Anti-fatigue



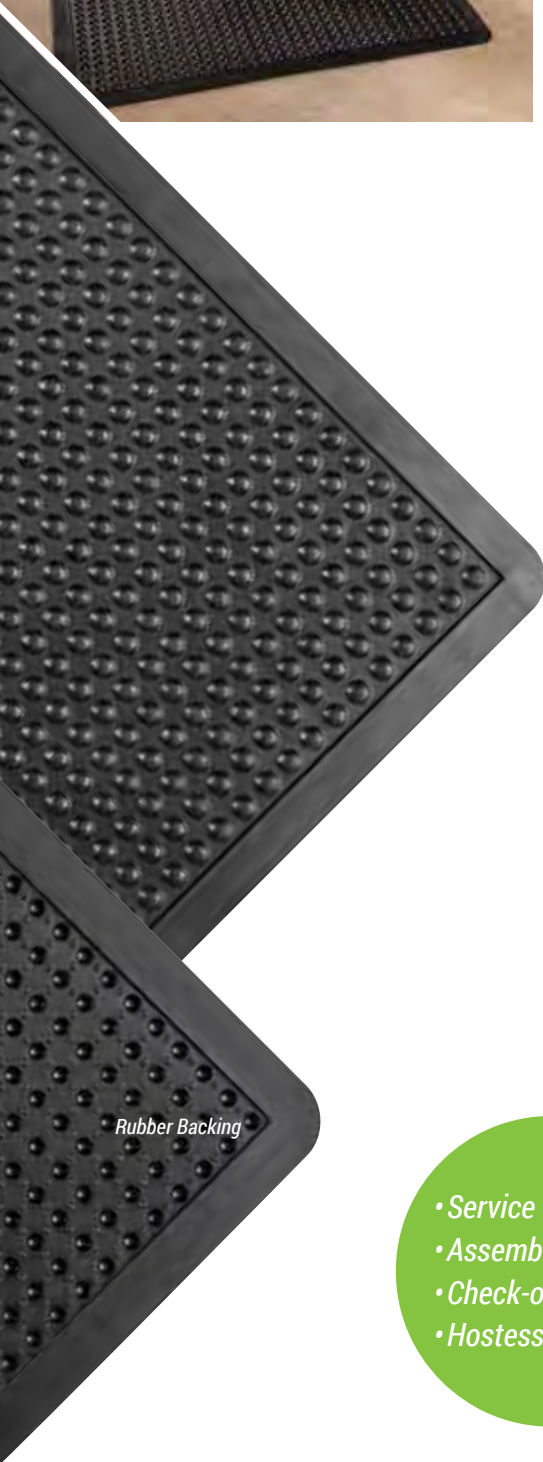
- Non-marking blend of natural and reclaimed rubber
- Air pockets force feet to shift naturally relieving stress on legs, back and feet
- Holds up to the toughest conditions

Beveled  
Edge



1/2"  
Thick

PART NO.	COLOR	SIZE	UPC (00079916)	CASE PK. /MOQ	CASE DIM.	CASE WT. (LBS.)
FMRBBAFS2436BK	Black	2' x 3'	02950 4	1	7" x 7" x 26"	8
FMRBBAFS3660BK	Black	3' x 4'	02951 1	1	7" x 7" x 38"	16



Rubber Backing

- Service Counters
- Assembly Lines
- Check-out Counters
- Hostess Stations







- Service Counters
- Assembly Lines
- Check-out Counters
- Hostess Stations

# Textured Mats Anti-fatigue



- Soft sponge cushioned vinyl
- Helps alleviate leg, back and foot pain
- Textured top surface provides traction to help prevent slipping hazards
- Lays flat and stays in place
- Easy to maintain – hose, wipe or vacuum

Beveled  
Edge



3/8"  
Thick

Vinyl Backing

PART NO.	COLOR	SIZE	UPC (00079916)	CASE PK. /MOQ	CASE DIM.	CASE WT. (LBS.)
FMVTAF2436BK	Black	2' x 3'	02965 8	1	6" x 6" x 25"	4
FMVTAF3660BK	Black	3' x 5'	02967 2	1	7" x 7" x 38"	9
FMVTAF36120BK	Black	3' x 10'	02966 5	1	8" x 8" x 38"	17



- Service Counters
- Assembly Lines
- Check-out Counters
- Hostess Stations

## Ribbed Mats Anti-fatigue

- Soft sponge cushioned vinyl
- Helps alleviate leg, back and foot pain
- Ribbed top surface traps dirt, resists oil and grease, won't absorb water
- Lays flat and stays in place
- Easy to maintain – hose, wipe or vacuum

**Beveled  
Edge**



**3/8" Thick**

PART NO.	COLOR	SIZE	UPC (00079916)	CASE PK. /MOQ	CASE DIM.	CASE WT. (LBS.)
FMVRAF2436BK	Black	2' x 3'	02962 7	1	7" x 7" x 26"	4
FMVRAF3660BK	Black	3' x 5'	02964 1	1	7" x 7" x 38"	9
FMVRAF36120BK	Black	3' x 10'	02963 4	1	8" x 8" x 38"	17

Vinyl Backing





Polyurethane Backing

- Service Counters
- Check-out Counters
- Salons
- Work Stations

## Standing Mats Anti-fatigue



- Crush resistant closed cell polyurethane
- Chemical and UV resistant surface helps prevent fading and cracking
- Molded beveled edges never curl; helps eliminate tripping hazards

Beveled  
Edge



3/4"  
Thick

PART NO.	COLOR	SIZE	UPC (00079916)	CASE PK. /MOQ	CASE DIM.	CASE WT. (LBS.)
AFP1824	Black	1.5' x 2'	01698 6	1	19" x 25" x 1"	4
AFP2436	Black	2' x 3'	01163 9	1	25" x 37" x 1"	6





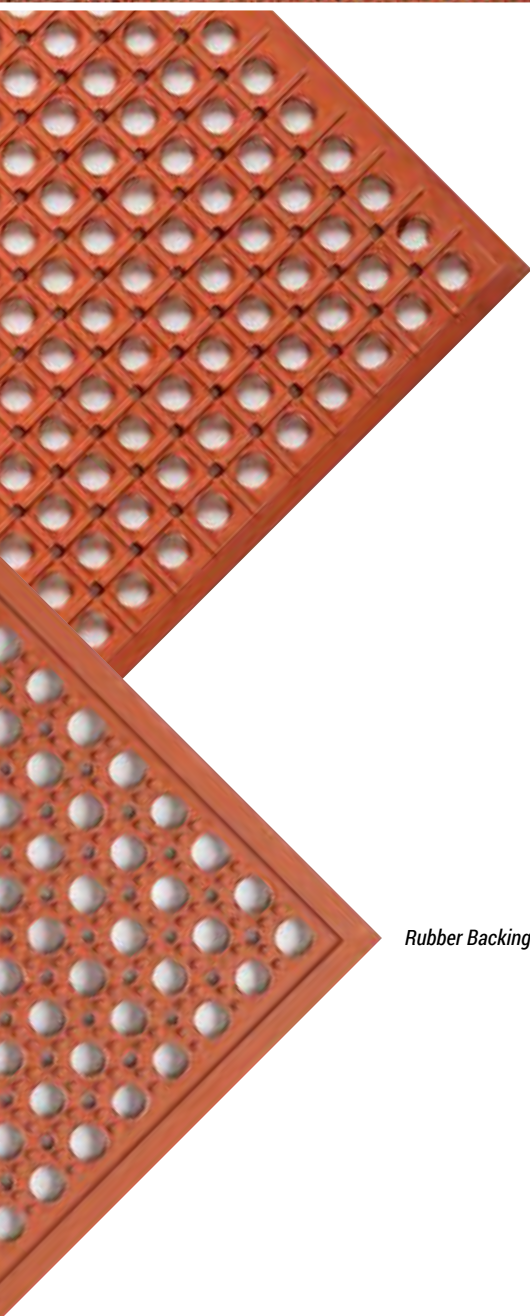
# Utility Mats Anti-fatigue



- Heavy rubber compound provides traction in wet or dry areas
- Recommended for commercial kitchens and industrial workstations
- Open hole design allows drainage
- Stays in place



PART NO.	COLOR	SIZE	GREASE PROOF	UPC (00079916)	CASE PK. /MOQ	CASE DIM.	CASE WT. (LBS.)
FMRGP3660BK	Black	3' x 5'	No	02952 8	1	7" x 7" x 38"	20
FMRGP3660RD	Red	3' x 5'	Yes	02953 5	1	7" x 7" x 38"	20



Rubber Backing



- Food Service
- Bar Area
- Drink Station
- Machine Shops



# Indoor/Outdoor Mats

People carry more than themselves into a building when using an entrance. Regular foot traffic can bring in dirt, water and other debris that business and homeowners don't want to see on their floors. Deflecto's line of entrance mats help protect and maintain heavy traffic areas.

Entrance mats are great for use in retail stores, warehouses, theaters and offices. Designed for use indoors and outdoors, they can be placed just where you need them.



- Entry Ways
- Lobbies
- Break Rooms
- Malls
- Hotels
- Theaters

## Entrance Mats Indoor/Outdoor



- Raised polyester carpet dries quickly
- Waffle pattern scrapes and traps debris and moisture
- Won't wrinkle, mildew or shrink
- High traffic floor protection
- Rubber edge
- Anti-skid backing

Beveled  
Edge



1/4"  
Thick

PART NO.	COLOR	SIZE	UPC (00079916)	CASE PK. /MOQ	CASE DIM.	CASE WT. (LBS.)
FMRIOE2436BN	Brown	2' x 3'	01021 2	1	4.5" x 4.5" x 28"	5
FMRIOE3660BN	Brown	3' x 5'	02956 6	1	7" x 7" x 38"	13
FMRIOE4872BN	Brown	4' x 6'	02958 0	1	7" x 7" x 49"	24
FMRIOE36120BN	Brown	3' x 10'	02954 2	1	7" x 7" x 38"	34
FMRIOE2436CG	Charcoal	2' x 3'	01022 9	1	4.5" x 4.5" x 28"	5
FMRIOE3660CG	Charcoal	3' x 5'	02957 3	1	7" x 7" x 38"	13
FMRIOE4872CG	Charcoal	4' x 6'	02959 7	1	7" x 7" x 49"	24
FMRIOE36120CG	Charcoal	3' x 10'	02955 9	1	7" x 7" x 38"	34



Anti-skid Rubber  
Backing





Rubber Backing

- Entrances
- Water Fountains/Ice
- Kitchens
- Vending Areas



## Brush Tip Scraper Mats Outdoor

- Durable molded rubber construction
- Flexible raised nubs scrape dirt from shoes and traps debris and moisture
- Stays in place and will not slide to ensure safe footing
- Easy to maintain— shake or hose off
- Perfect for all climates

Beveled Edge



5/8" Thick

PART NO.	COLOR	SIZE	UPC (00079916)	CASE PK. /MOQ	CASE DIM.	CASE WT. (LBS.)
FMRBRSH2432BK	Black	24" x 32"	02960 3	1	7" x 7" x 26"	11
FMRBRSH3660BK	Black	3' x 5'	02961 0	1	8" x 8" x 38"	27

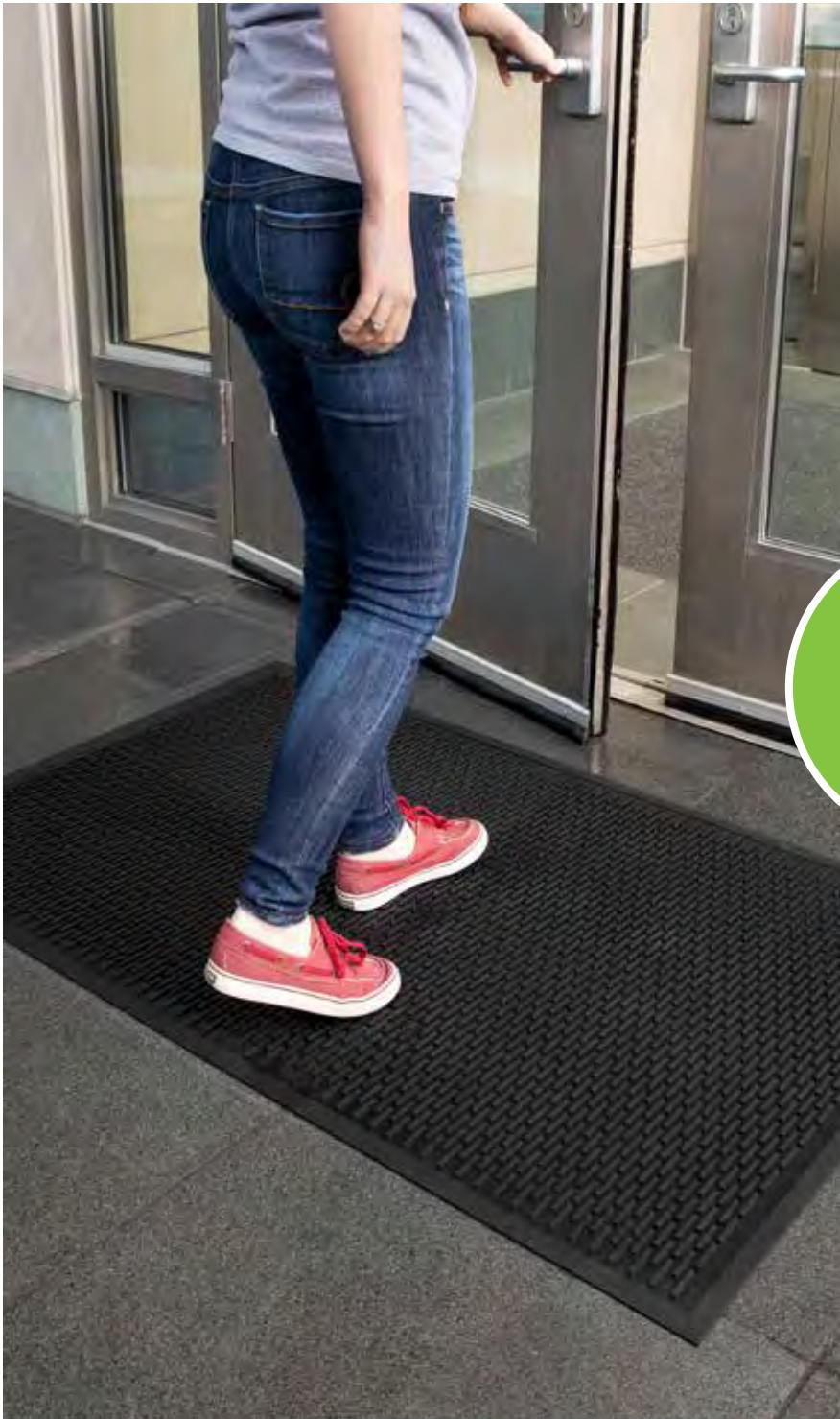


# Cleated Scraper Mats Indoor/Outdoor

- Molded rubber construction
- Cleated top surface scrapes and traps debris
- Provides traction to ensure safe footing
- Easy to maintain– shake or hose off

Beveled Edge  1/4" Thick

PART NO.	COLOR	SIZE	UPC (00079916)	CASE PK. /MOQ	CASE DIM.	CASE WT. (LBS.)
FMRSCR2436BK	Black	2' x 3'	02419 6	1	4.5" x 4.5" x 28"	6
FMRSCR3660BK	Black	3' x 5'	02420 2	1	5" x 5" x 38"	16



- Entrances
- Break Rooms
- Kitchens
- Vending Areas



Rubber Backing



For nearly 60 years, Deflecto has kept a commitment to product innovation, quality and customer service. This commitment, along with our broad range of products, has been the key to developing strong, long-lasting relationships with our customers.

For more information on all Deflecto products, visit: [deflecto.com](http://deflecto.com)



©2019 Deflecto, LLC  
Indianapolis, IN 46250  
Customer service: 1-800-428-4328  
website: [deflecto.com](http://deflecto.com)



#### **WARRANTY POLICY** **Limited Five, Two and One Year** **Product Replacement Warranties**

Warranty—Deflecto, LLC ("Deflecto") warrants its floor mats to be free from defects in workmanship and materials at the time of shipment to the original purchaser and/or date of original purchase. Should the molded beveled edges curl or show damage under normal usage and proper application, we will replace the floor mat or refund the purchase price at our discretion, upon proof of purchase. This limited warranty does not include shipping charges and processing to and from the factory and/or distribution facility. Product replacement or refund of purchase price are the sole remedies provided under this limited warranty.

Deflecto is not responsible for consumer abuse, misuse, or mishandling of the product. These floor mats will not be covered under warranty against puncture by shoes with stilettos or spike heels, or any other similar sharp object. This limited warranty does not cover damage arising from negligence, improper use or application, fire, house pets, wet mopping, excessive dryness, excessive exposure to moisture, sand, dust, dirt and/or other sharp or abrasive objects, punctures by shoes with stilettos or spike heels, and or furniture.

THIS LIMITED WARRANTY EXCLUDES AND WILL NOT PAY CONSEQUENTIAL OR INCIDENTAL DAMAGES ASSOCIATED WITH ANY WARRANTY CLAIM. PRODUCT REPLACEMENT OR REFUND OF THE COST OF THE FLOOR MAT ARE THE SOLE REMEDIES. NO DISTRIBUTOR, RETAILER, SALES REPRESENTATIVE, AGENT OR EMPLOYEE ASSOCIATED WITH DEFLECTO, DIRECTLY OR INDIRECTLY, MAY IN ANY WAY ALTER OR INCREASE THE WRITTEN TERMS, CONDITIONS, EXCLUSIONS OR LIMITATIONS OF THIS WARRANTY.

This limited warranty gives you specific legal rights, and you may also have other rights which vary from state to state. Some states do not allow the exclusion or limitation of incidental or consequential damages, so the above limitation or exclusion may not apply to you.

If you wish to file a claim under warranty please contact Deflecto Customer Service for a warranty claim form. The completed claim form must be accompanied by a purchase receipt or invoice which can be sent via email, mail, and/or fax to 877-333-5351 or [customerservice@deflecto.com](mailto:customerservice@deflecto.com).

Deflecto reserves the right to inspect the returned goods for evidence of misuse within 30 days prior to issuing any replacement or refund of the floor mat. Refusal to provide such an opportunity for inspection will void the limited warranty.